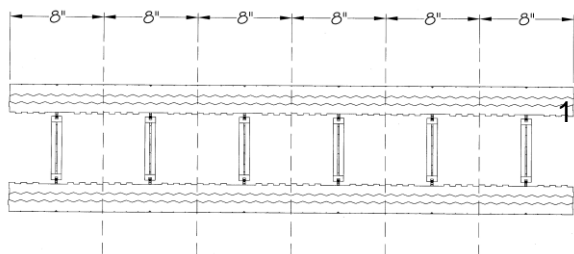


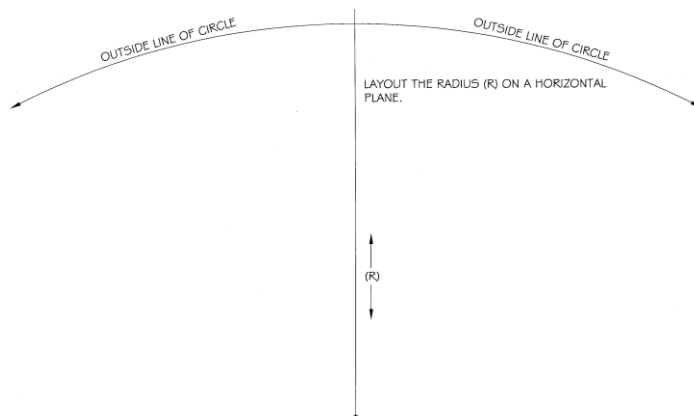
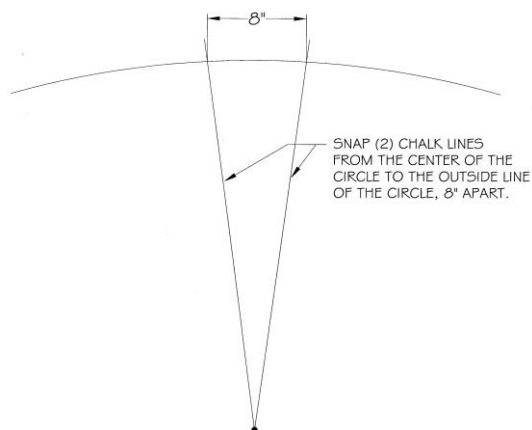
RADIUS WALLS

These instructions are intended to assist the installer in an effective and time efficient fabrication of the radius wall forms. Proper bracing, reinforcing, and placement of concrete is the responsibility of the contractor. All radius dimensions are to the outside face of the CELBLOX® ICF.



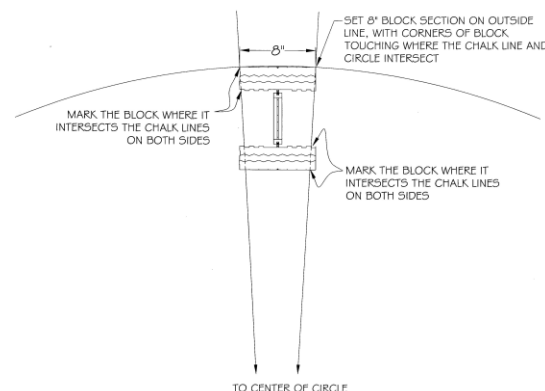
1. Cut straight panels into 8" increments. When cutting, make sure you keep the web centered in the 8"

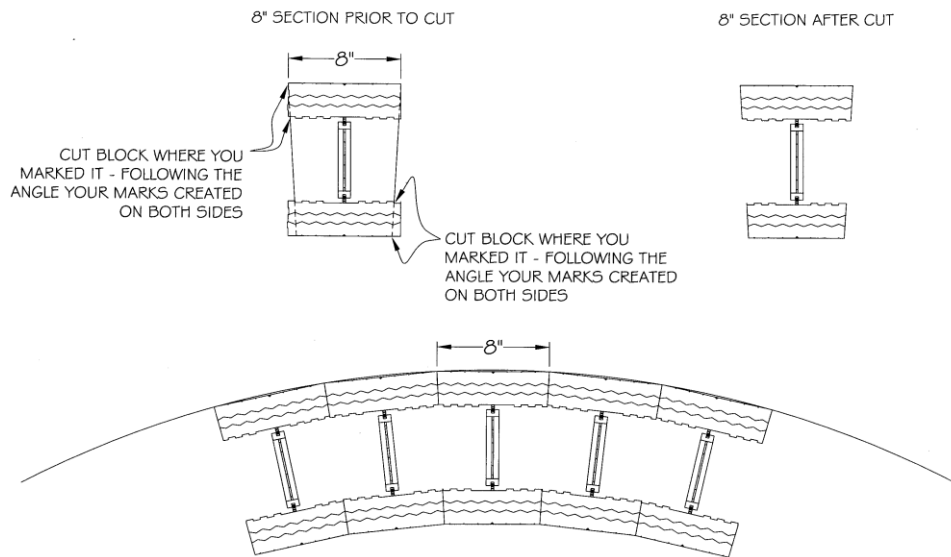
2. Mark the outside of the radius on the footing or slab. If site conditions do not permit the radius to be marked on the footing or slab, any horizontal surface will do.



3. From the center of the circle, snap a chalk line extending beyond the mark for the outside of the radius.
4. Measure from first chalk line, 8" horizontally and make a mark
5. From the center of the circle, snap another chalk line at the 8" mark.

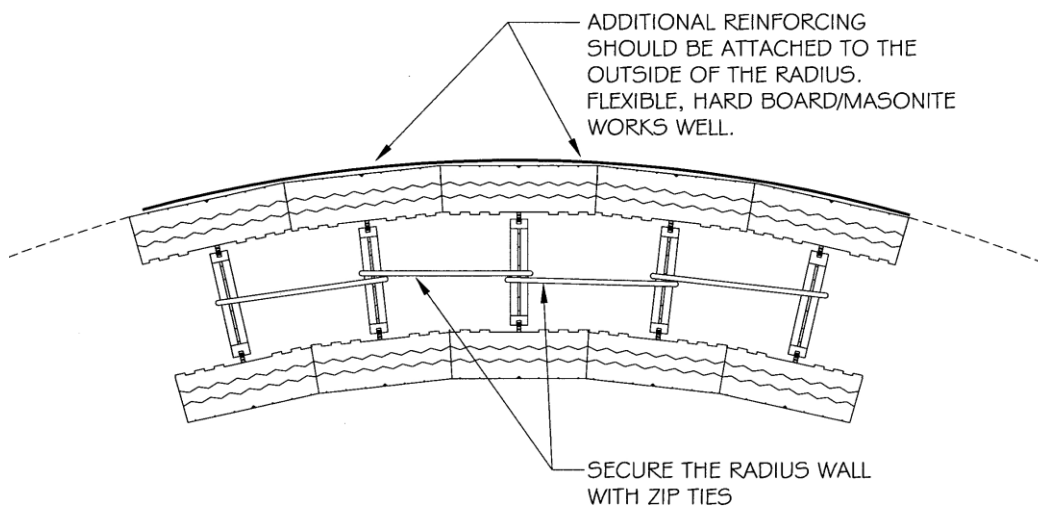
6. Set one of the 8" block sections on the outside radius line.
7. Make sure the outside corners of the block are at the intersection of the chalk lines and the radius line.
8. Mark the block where it touches the chalk line.
9. Cut the block where you marked it, following the angle your marks created
10. This will be the miter cut you use to make remaining cuts for the entire radius wall





11. Repeat Step 9 until the correct number of blocks has been cut to complete the wall.

12. Stack forms, aligning webs vertically.
13. Zip tie the blocks together.
14. Additional reinforcing in the form of flexible, hardboard Masonite should be attached to the inside and outside of the wall.
15. Bracing on the interior of the wall should be the same spacing as typical bracing.





NON-STANDARD JOINTS are any vertical joints that are too close together or are not offset properly. Cuts wider than 4" should have strapping installed to span two webs in each direction and be installed on both sides. Scrap lumber, if long enough, or strips of OSB or plywood can be used for strapping these types of joints. The common seam, if used, should also be braced using this method.

RADIUS WALL STRAPPING

Fasten 1/8" hardboard strips to the inside and outside panel face with drywall screws flush to the bottom of each course. Ensure that the pieces are tight together and aligned at the top prior to fastening.

An ICF bracing system must also be installed on the radius.

